

## Concrete Multifunction Slab and Specifier Product Making Machinery RTM

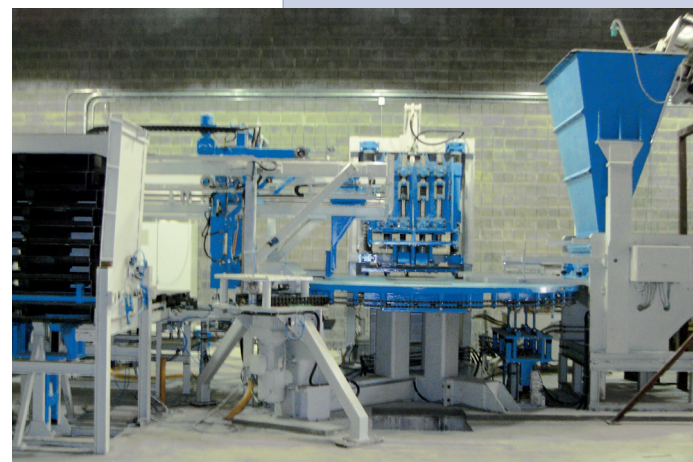


### Multifunction machine

- Outdoor and indoor products
- Textured and chamfered products
- Highly decorative products, shotblasted, grinded, coated, polished, brushed, washed
- Paving slabs
- Cobble stones
- Heavy-duty slabs up to 12 cm high
- Products with or without face mix
- Multifunctions slabs
- Split stone parents, pitched face walling till 22 cm
- Facade elements
- Nature- and splitting imitation
- Steps
- Palisades
- Wall stone copings
- Kerbstones and channels
- Special specifier flags, e.g. tactile slabs for the visually handicapped
- Cable covers for railroad, telecommunication and electricity works
- Reinforced products
- Adjustment rings, rings for manhole covers
- Chimney blocks

For manufacture of concrete slabs and specifier stones

Turn table machine RTM 4H-4 stations

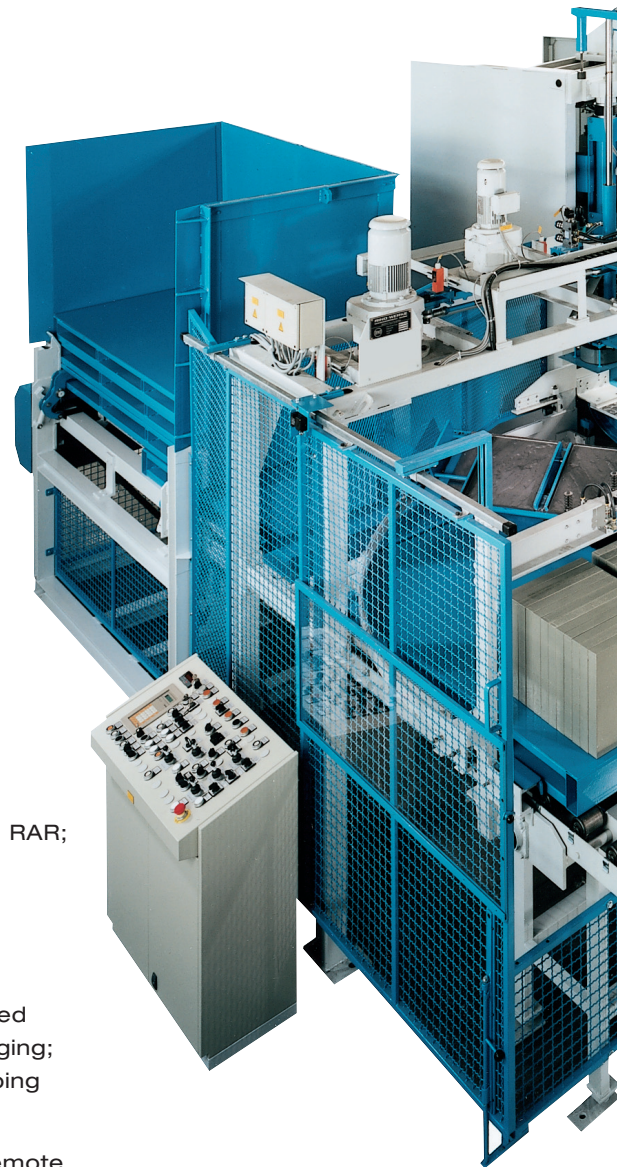


# Advantages of the RIMAC Tamping Unit

- Height flexibility optional from 2 cm to 22 cm; filling height regulation from the control desk
- Design flexibility by using matrixes and tamping plate
- Product flexibility: multifunctional moulds because of height- and design flexibility
- Face-mix flexibility; production change-over from face mix up or face mix down is possible at any time
- Highest compaction of concrete mixes with consistency like moist earth with flexural strength ratings far above standards
- Excellent surface, sharp contours and product parallelism
- 20% - 50% less cement consumption compared to other compaction processes
- Paving slabs have high salt/frost and abrasion resistance
- New turn table concept for quicker set-up and cycle times from 8 seconds
- Very similar concrete mix as used in block making machines
- Extreme longevity of the machine
- Moulds sometimes used for more than 20 years
- Exceptionally high reliability because of low maintenance and cleaning with compressed air

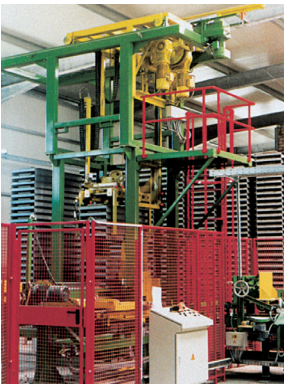
## Extension Variants

- Turntable with 3 - 6 work stations
- RFS flat stacking system equipped with RW 2x90° turner (butterfly) or RW 180° turner
- Edge stacking by swivel plate system RSS
- New: RCO combined RW 2x90° flat- and RSS edge stacking
- Paper or reinforcement placer RPP
- Matrix return RMR
- New: band filling device
- Storage and racking systems:
  - automatic on edge stacking system RAR;
  - automatic flat stacking RFS incl. transfer car system RAS;
  - racking system (mobile) RAC
- Packaging system:
  - RPA flexible packbuilder for combined flat stack and on edge stack packaging;
  - RPV packbuilder with vertical strapping
- RICS Information Control System: automatic filling height adjustment, remote maintenance, fault diagnosis, data storage



Turn table machine RTM 4H  
with swivel system edge  
stacker RSS

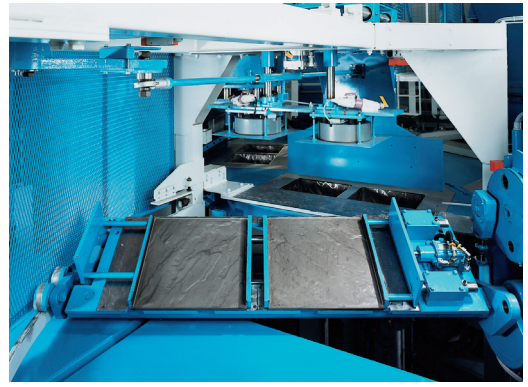




**Flat stack system RFS**

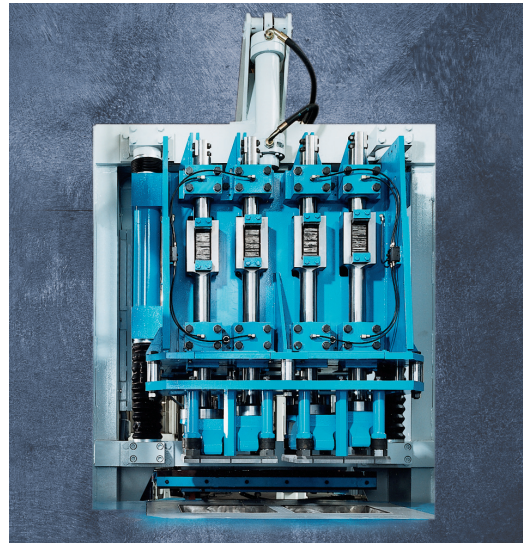
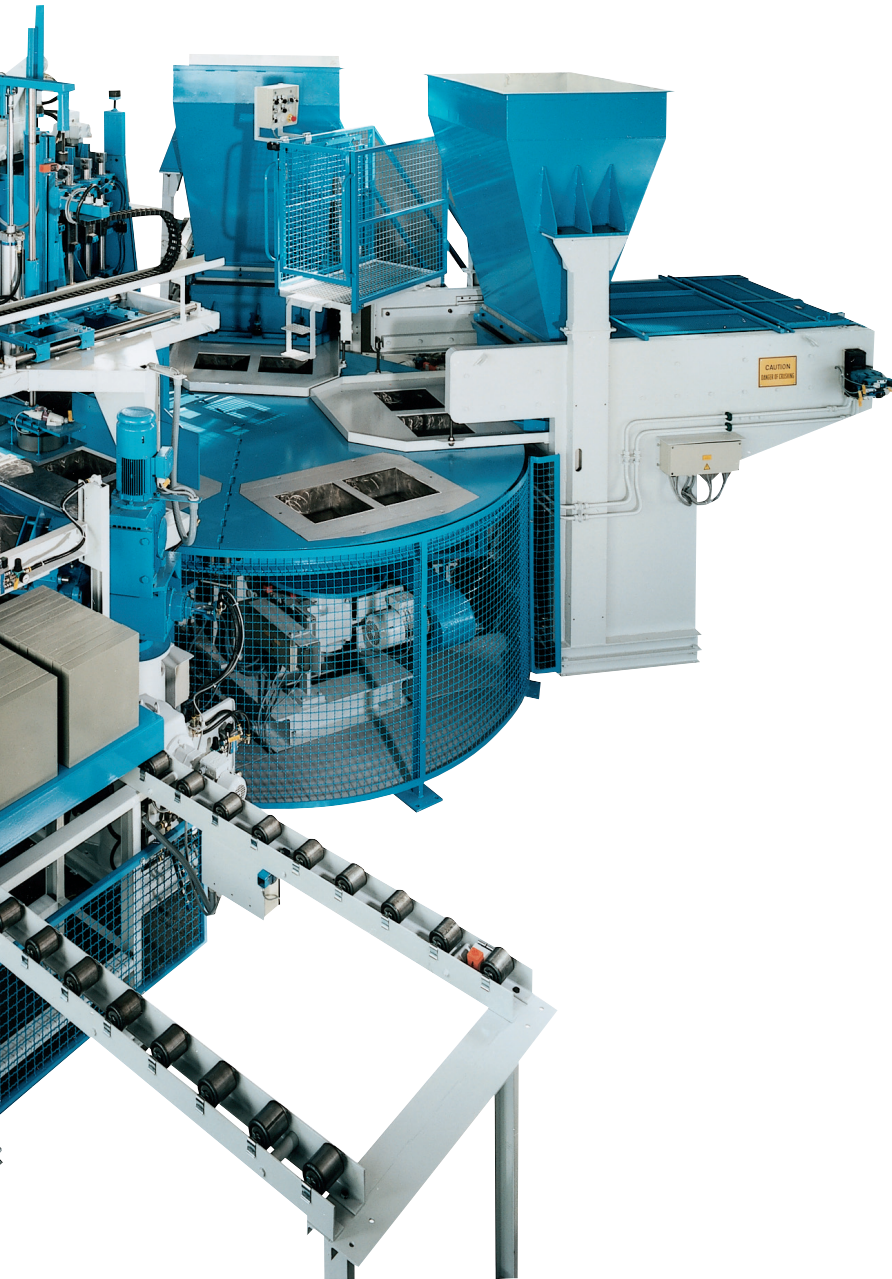


**Automatic racking system RAR**



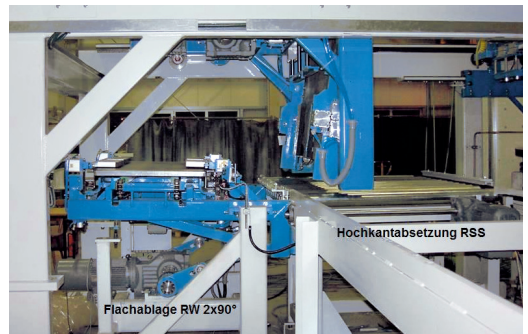
**RIMAC RSS on edge stack system and matrix return RMR**

- Textures
- Design on top and bottom

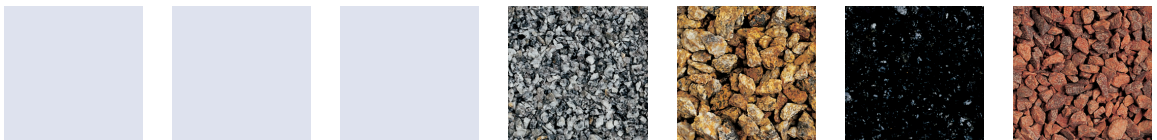


**RIMAC tamping 2-8 hammers;  
4 hammers standard; alternativ by 2R  
with vibration and top load**

- Product 50 x 50 / 60 x 60 duplex;  
60 x 100 / 120 simplex
- Product height flexible to 8 cm / 10 cm;  
optional to 215 mm
- Cycle time from 8 sec. with 8 strokes/sec.  
per hammer



**New: RCO combined stacking system with  
RSS on edge and RW 2x90° flat stacking**





**Public spaces, pavements, pedestrian areas**



**Private terraces, garden lanes, balconies, car ports and other use around the house**



**Railroad, telecommunications, airports, public sector**



**Industrial use, shopping malls, car parking, exhibition floors**

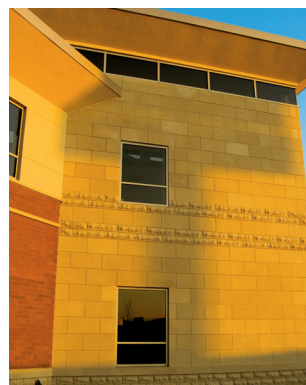
**RIMAC  
 Maschinen + Anlagen GmbH**

Im Bruch 4-10  
 D-69256 Mauer bei Heidelberg  
 Phone +49 (0) 6226-4291-0  
 Fax +49 (0) 6226-4291-10  
 Email [info@ri-mac.de](mailto:info@ri-mac.de)  
 Internet [www.ri-mac.de](http://www.ri-mac.de)

Subsidiary Weilheim:  
 Paradeisstraße 56  
 D-82362 Weilheim  
 Phone +49 (0) 881-627-215  
 Fax +49 (0) 881-627-278  
 Email [info@ri-mac.de](mailto:info@ri-mac.de)  
 Internet [www.ri-mac.de](http://www.ri-mac.de)



**Building construction**



**Facades**



**Infrastructure**

